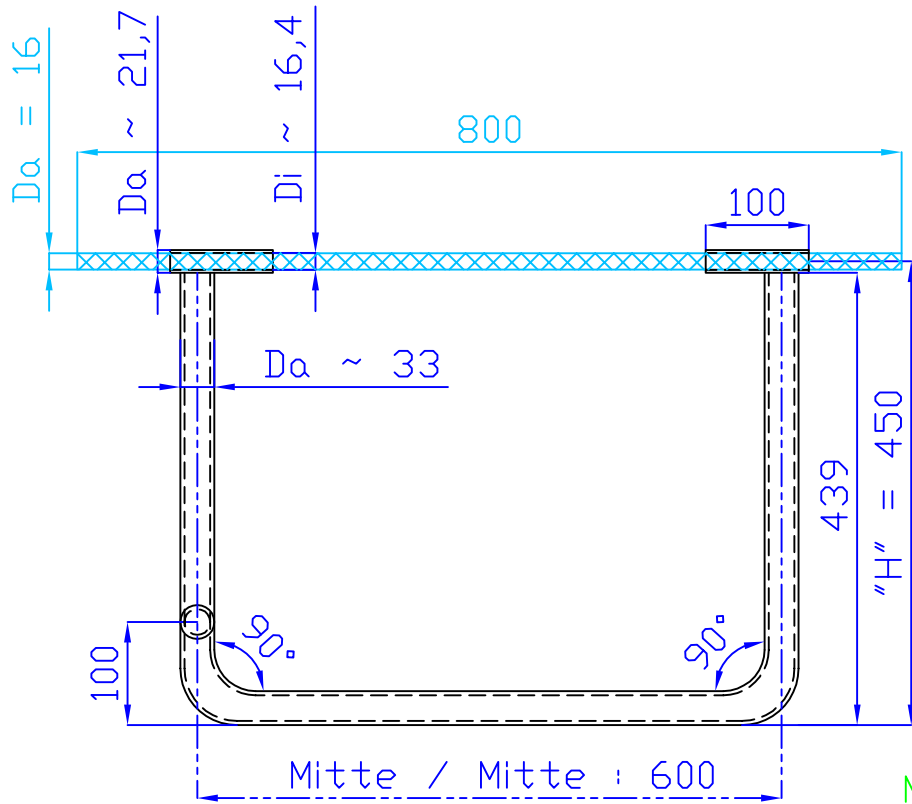


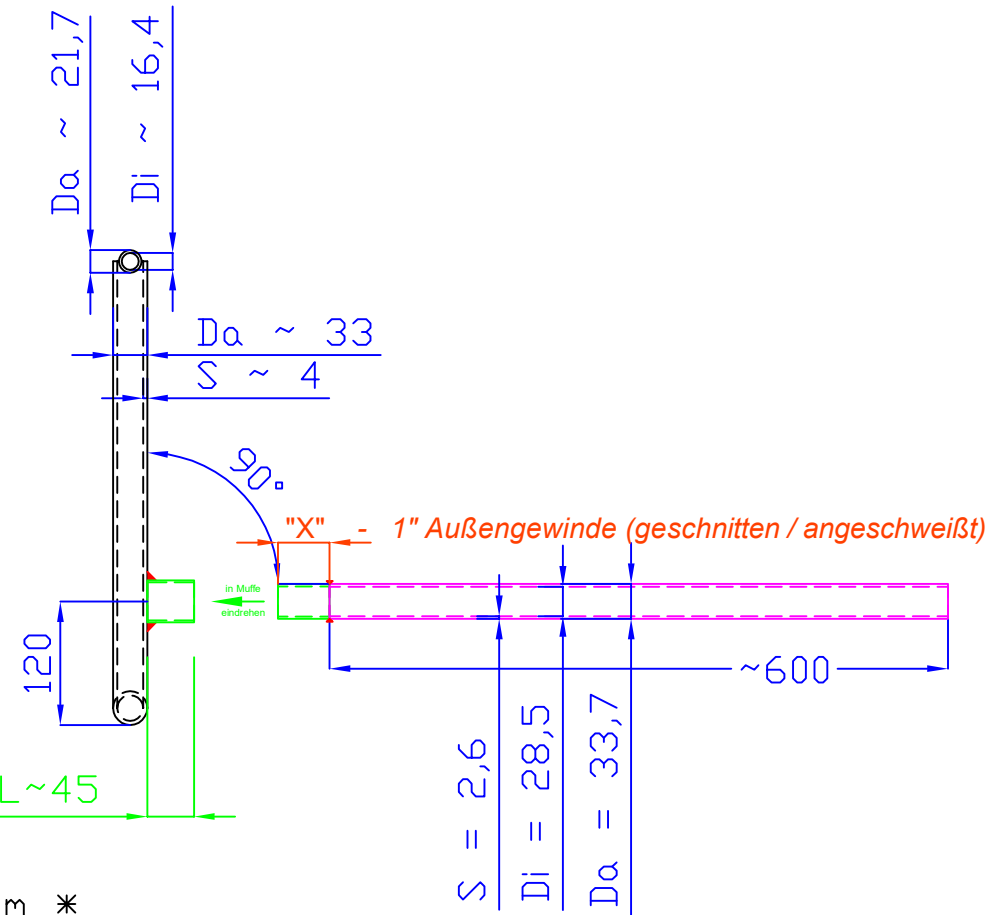
Mittelheber à la schleife2

Rohrmaterial : nahtloses Stahlrohr 1 " und 1/2"
 Material d. Stange : [42CrMoS4 \(C4-Stahl\)](#), $D_a = 16 \text{ mm}$

Bauart : **U-gebogen**
 (C) 2010 by schleife2



Muffe 1", L~45



* alle Maße in mm *

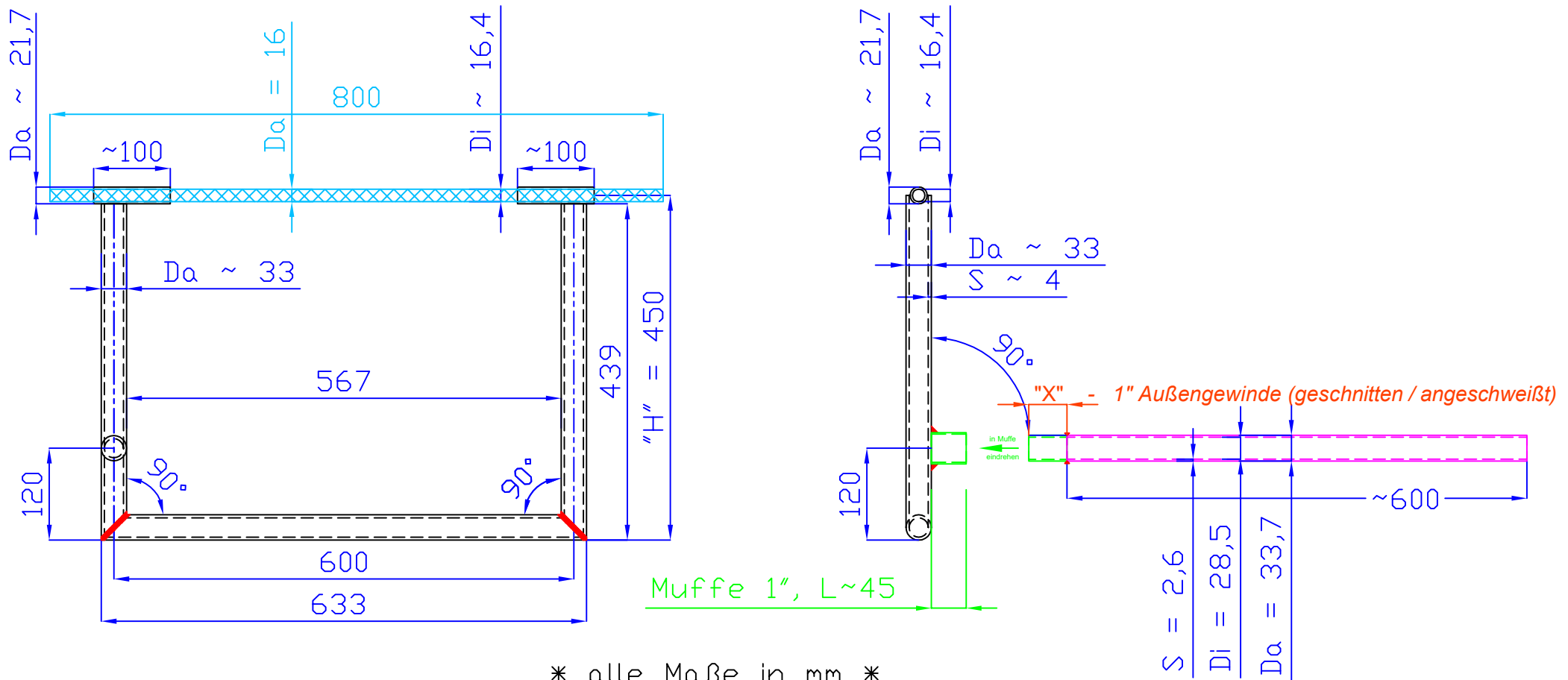
Mittelheber á la schleife2

Rohrmaterial : nahtloses Stahlrohr 1 " und 1/2"

Material d. Stange : [42CrMoS4 \(C4-Stahl\)](#), $D_a = 16 \text{ mm}$

Bauart : **U - geschweißt**

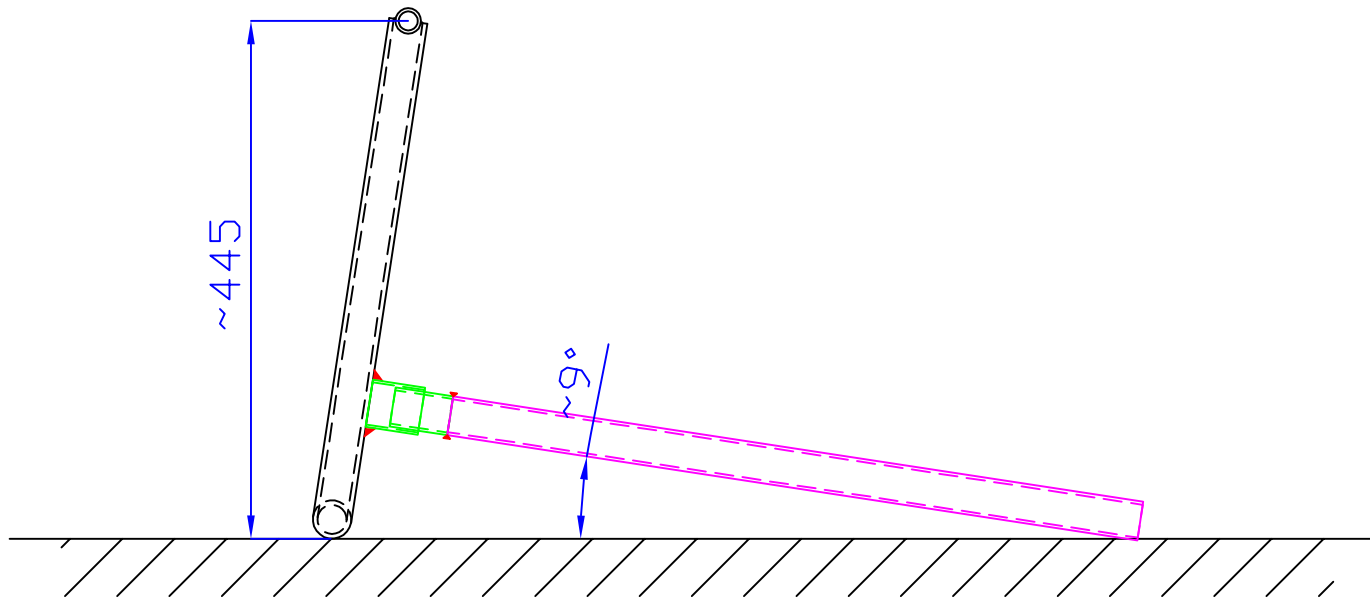
(C) 2010 by schleife2



Mittelheber á la schleife2

gekippt / in "Hebestellung"

(C) 2010 by schleife2



* alle Maße in mm *