

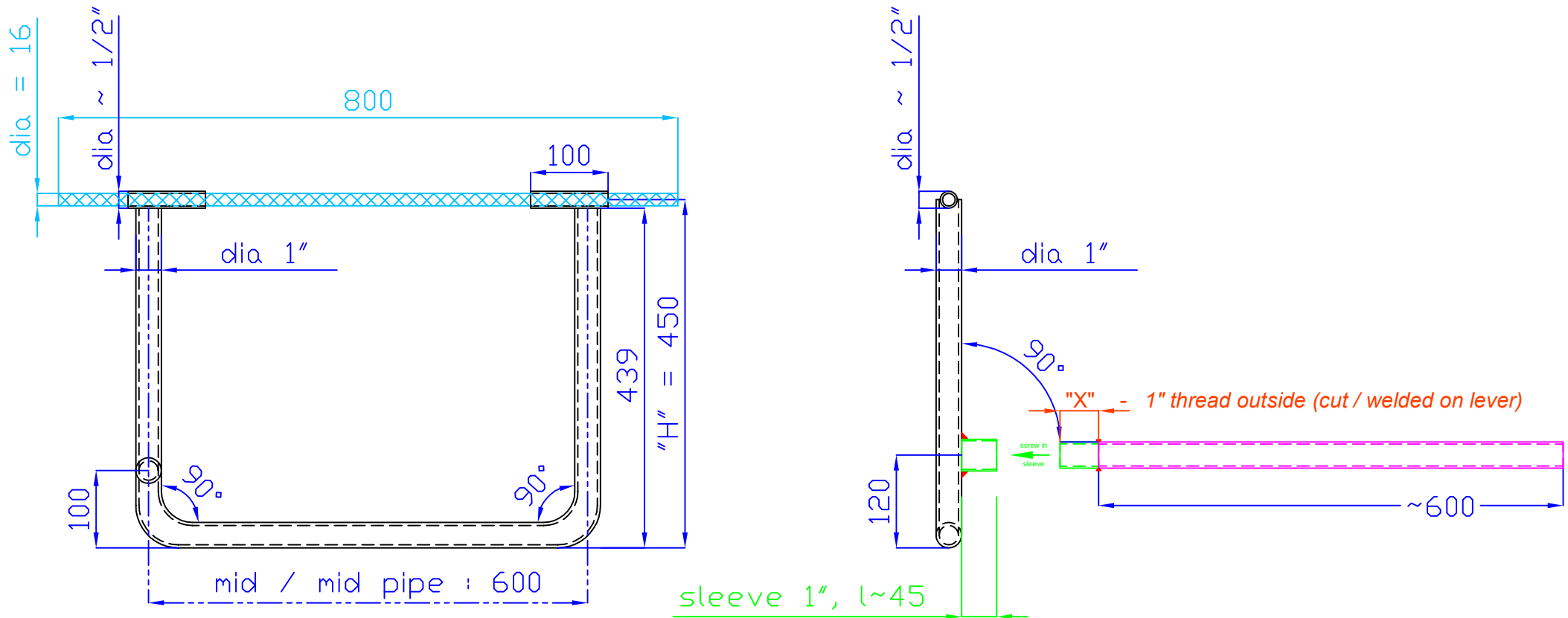
middle - jack à la schleife2

tube material : seamless steel tube 1 " and 1/2"

rigid steel rod : [42CrMoS4 \(C4-Stahl\)](#), dia = 16 mm

design type : **U - bent**

(C) 2010 by schleife2



* all measures in mm *

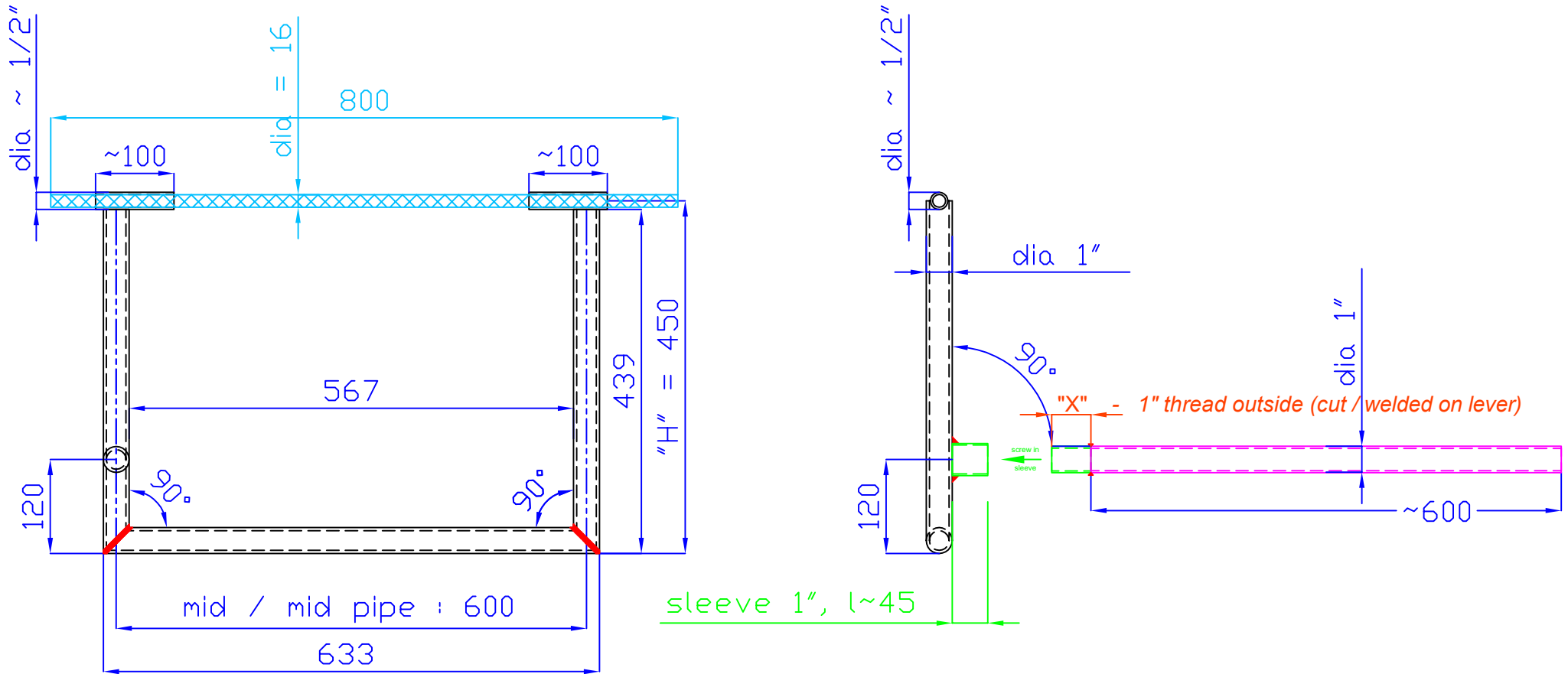
middle - jack á la schleife2

tube material : seamless steel tube 1 " and 1/2"

rigid steel rod : 42CrMoS4 (C4-Stahl), dia = 16 mm

design type : U - welded

(C) 2010 by schleife2

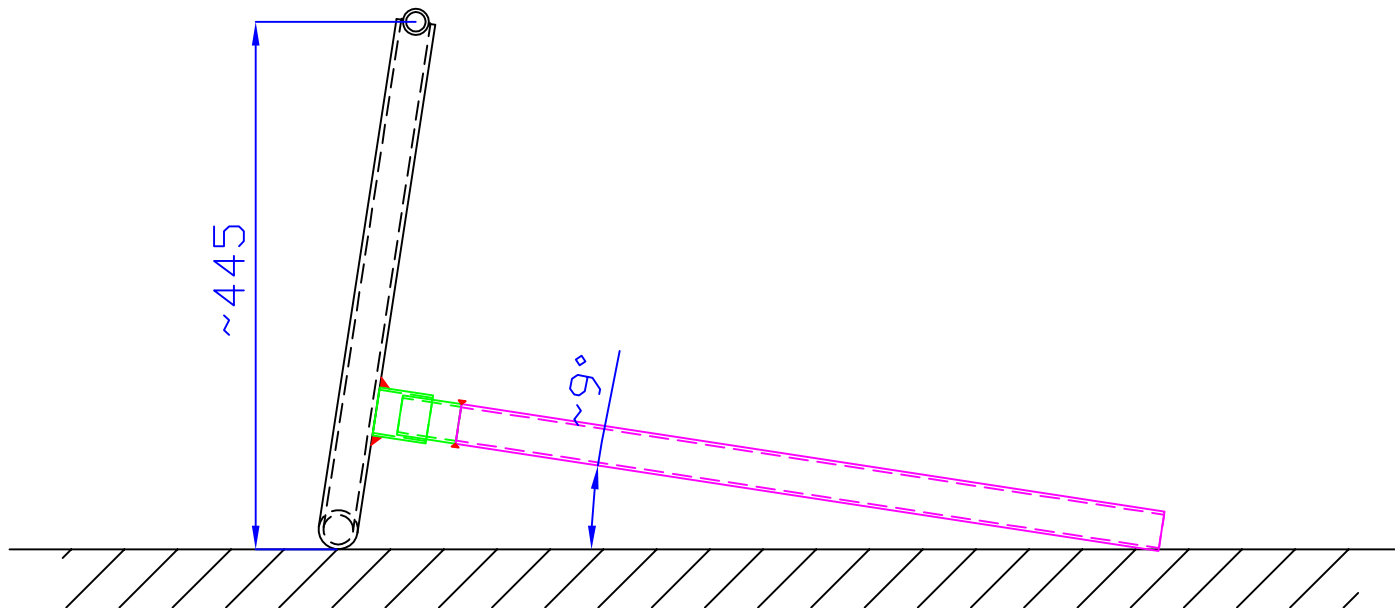


* all measures in mm *

middle - jack á la schleife2

tilted / in "lifting position"

(C) 2010 by schleife2



* all measures in mm *